

A lush indoor garden setting with several large trees, a central fountain, and modern furniture. The scene is filled with greenery and warm lighting. The text 'Dariana' is written in a white, elegant script font, and 'EVENTS' is written in a white, sans-serif font below it. The background shows a bar area with a counter and stools.

*Dariana*  
EVENTS

# Who We Are

*Say hello to refined, sophisticated smart spaces*



Located above the London Designer Outlet in the heart of North West London's newest creative neighbourhood, Dariana Events offers private studios with stylish on-site amenities and a vast array of private event spaces, hassle free with a consistent service. Dariana's light-filled 15th and 16th floors offer co-working and private events spaces, which include pre-function and outdoor areas and premium audio visual system technology. With jaw dropping views of the city and multi-media performance

spaces, there's no corporate or social event that's too large or small for Dariana's versatile events spaces to accommodate. Dariana Events is located in a neighbourhood overflowing with culture, creativity, food, shopping and an amazing community. Plus, guests can get anywhere in London fast. The Metropolitan, Jubilee line and National Rail all run from Wembley day and night. Whether you need a workspace, a large venue for a Christmas party or a private intimate dinner with family and friends.

[Book a Tour](#) | [Follow Us](#)



## On The 16th Floor

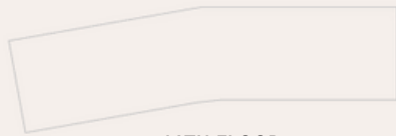
---

### The Sky Garden | The Lounge Bar

This versatile space, a luxurious retractable rooftop retreat, adorned with indoor olive trees and centred around a soothing stone fountain. Discover the art of our stunning centrepiece, a 360° bar that stands as the heart of our lounge bar in the clouds.



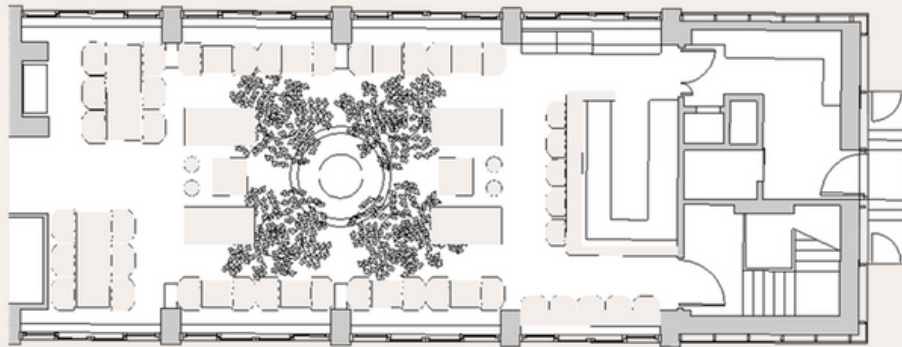
[Book a Tour](#) | [Follow Us](#)



16TH FLOOR  
ARRANGEMENTS

## The Sky Garden

*Perfect for weddings, birthday, Christmas parties  
and celebrations*



### Capacity

121.5 sq m | 1308 sq ft

The Sky Garden has a capacity of up to 80 people.



16TH FLOOR  
ARRANGEMENTS

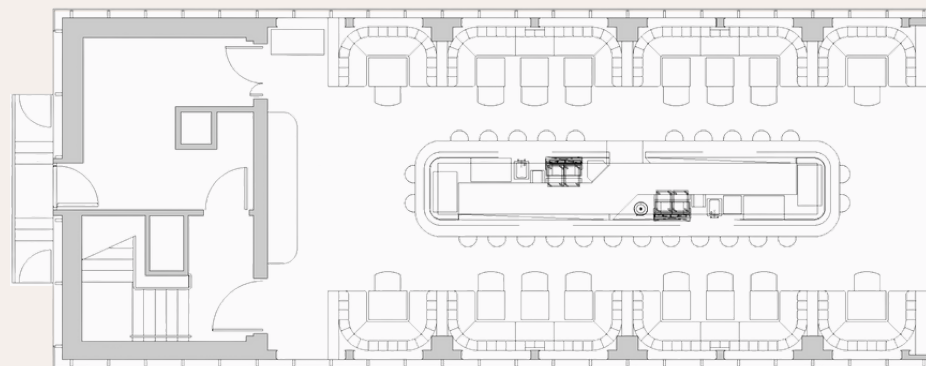
[Book a Tour](#) | [Follow Us](#)



16TH FLOOR  
ARRANGEMENTS

## The Lounge Bar

*Perfect for weddings, Christmas, cocktail parties  
and celebrations*



### Capacity

116 sq m | 1249 sq ft

The Lounge Bar has a capacity of up to 80 people.

[Book a Tour](#) | [Follow Us](#)



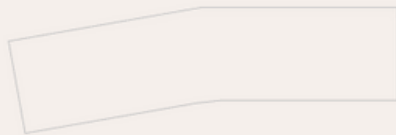
## On The 15th Floor

---

The Terrace | The Conference Room  
The Banquet Hall | The Theatre

The 15th-floor space — versatile, spacious, and equipped with an adaptable multifunctional hall, ready to transform your vision into reality. With the flexibility of expansion and enclosure, the partition walls offer personalised space arrangements and layouts to your preference. From BBQ terrace to corporate conferences, the possibilities are endless.

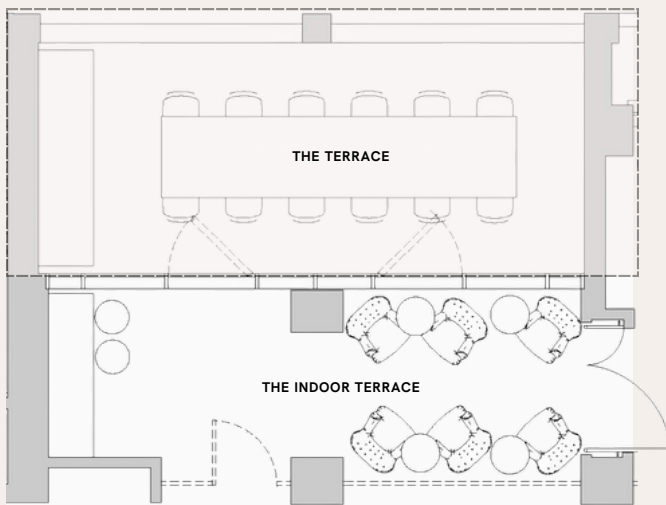
[Book a Tour](#) | [Follow Us](#)



15TH FLOOR  
ARRANGEMENTS

## The Terrace

*Perfect for BBQ, birthdays, Christmas parties and celebrations*



\*Arrangement can be changed.

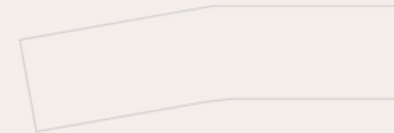
### Capacity

25.4 sq m | 273 sq ft

The Terrace has a capacity of up to 20 people.



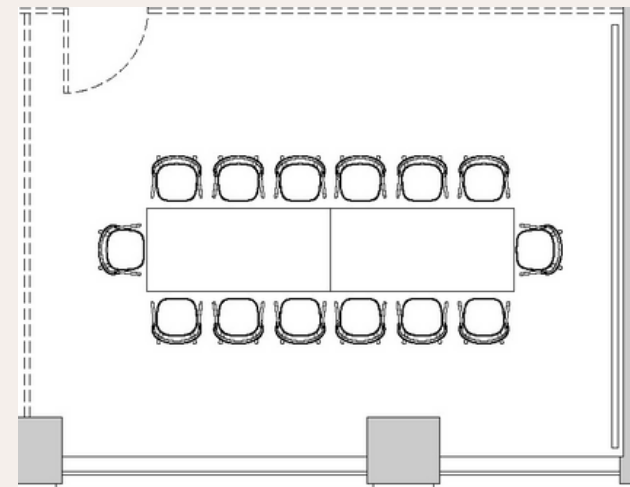
Book a Tour | Follow Us



15TH FLOOR  
ARRANGEMENTS

## The Conference Room

*Perfect for conferences, board meetings, networking events, seminars and workshops*



\*Arrangement can be changed.

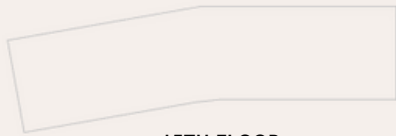
### Capacity

30.8 sq m | 331 sq ft

The Conference Room has a capacity of up to 30-120 people.

[Book a Tour](#) | [Follow Us](#)

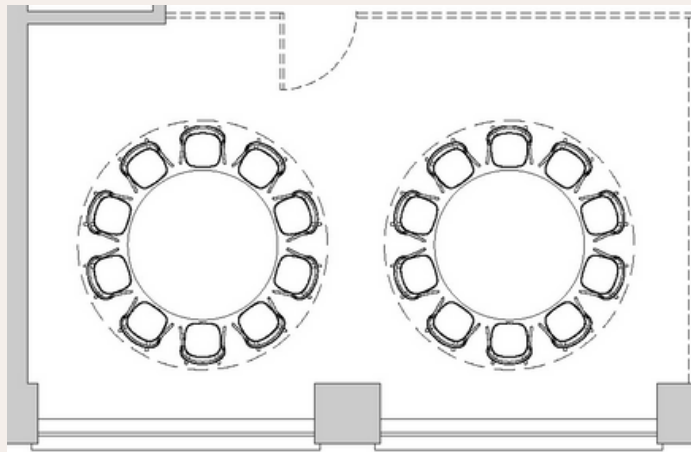




15TH FLOOR  
ARRANGEMENTS

## The Banquet Hall

*Perfect for weddings, birthdays, Christmas parties  
and celebrations*



\*Arrangement can be changed.

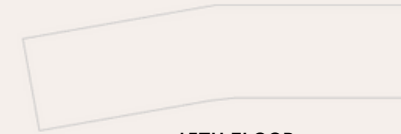
### Capacity

121.4 sq m | 1307 sq ft

The Banquet Hall has a capacity of up to 30-120 people.



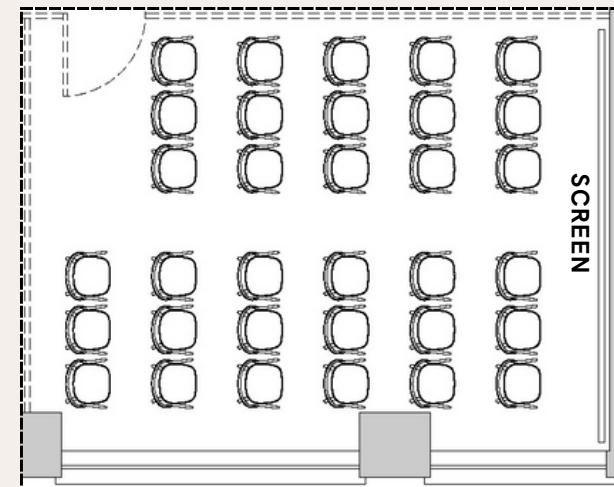
[Book a Tour](#) | [Follow Us](#)



15TH FLOOR  
ARRANGEMENTS

## The Theatre

*Perfect for screenings, presentations, corporate  
conferences and product launches*



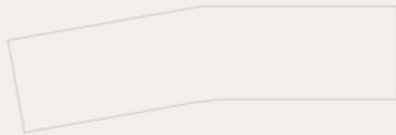
\*Arrangement can be changed.

### Capacity

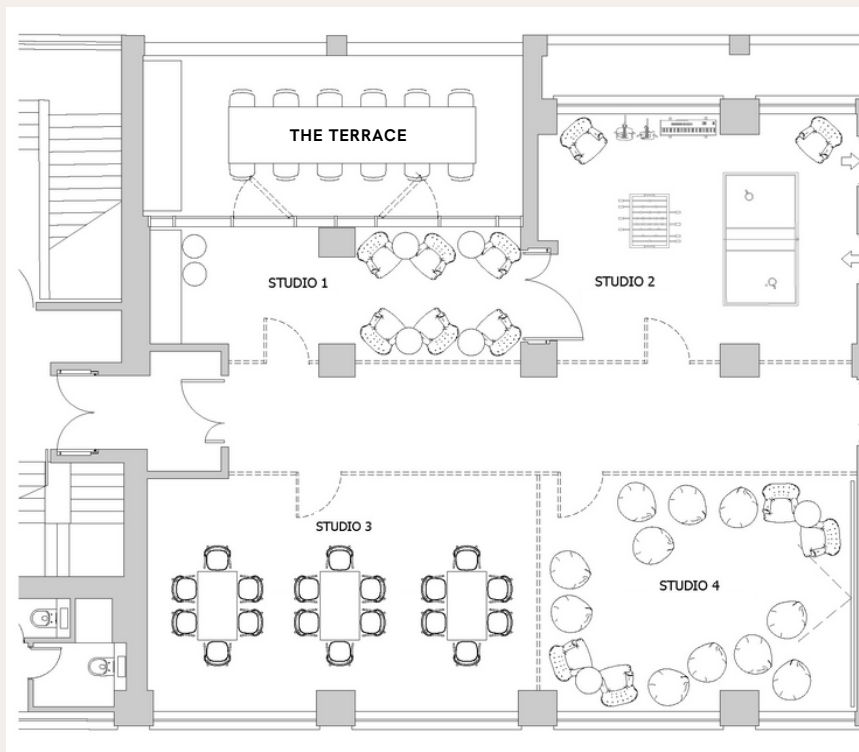
30.8 sq m | 331.5 sq ft

The Theatre has a capacity of up to 30-120 people.

Book a Tour | Follow Us



### 15TH FLOOR ARRANGEMENTS



\*Arrangement can be changed.

## Versatile and Expandable

Our spaces are built with you in mind. We aim to meet all your needs, allowing for seamless expansion to accommodate to your preferences. Whether it's an intimate gathering, a screening event, or a board meeting, we offer the flexibility to adjust the space according to your desires. We are here to make your vision a reality.

## Capacity

121.4 sq m | 1307 sq ft

The 15th Floor has a capacity of up to 120 people.

[Book a Tour](#) | [Follow Us](#)

## Dariana's Technology

---

*Our versatile Audio Visual System offers multi-zone control, easily adaptable as individual rooms or combined for larger spaces*

In each room, a high-performance audio system is accessible within the room or through a central connection point. AV panels connect various audio sources, which can be routed to other spaces via Touch Control Panels.

These rooms feature Audio, Dante, AVOIP DMX, and power infrastructure for external productions, strategically placed in Wall and Ceiling panels. Ceiling rigging points support suspended equipment, enabling flexible room setups to suit a wide range of events. Most importantly, this setup allows efficient distribution of lighting control, audio, and video over the network, eliminating the need for extra cabling.



[Book a Tour](#) | [Follow Us](#)



## Dariana's Services

---

*Our event space offers a comprehensive suite of services designed to elevate every occasion*

Bespoke Event Planning  
Decor Services  
Customised Space Arrangements  
Flexible Seating Arrangements  
Customised Themes  
Customised Signage  
Floral Design & Styling  
Centralised Audio Visual System  
Catering & Staffing

[Book a Tour](#) | [Follow Us](#)

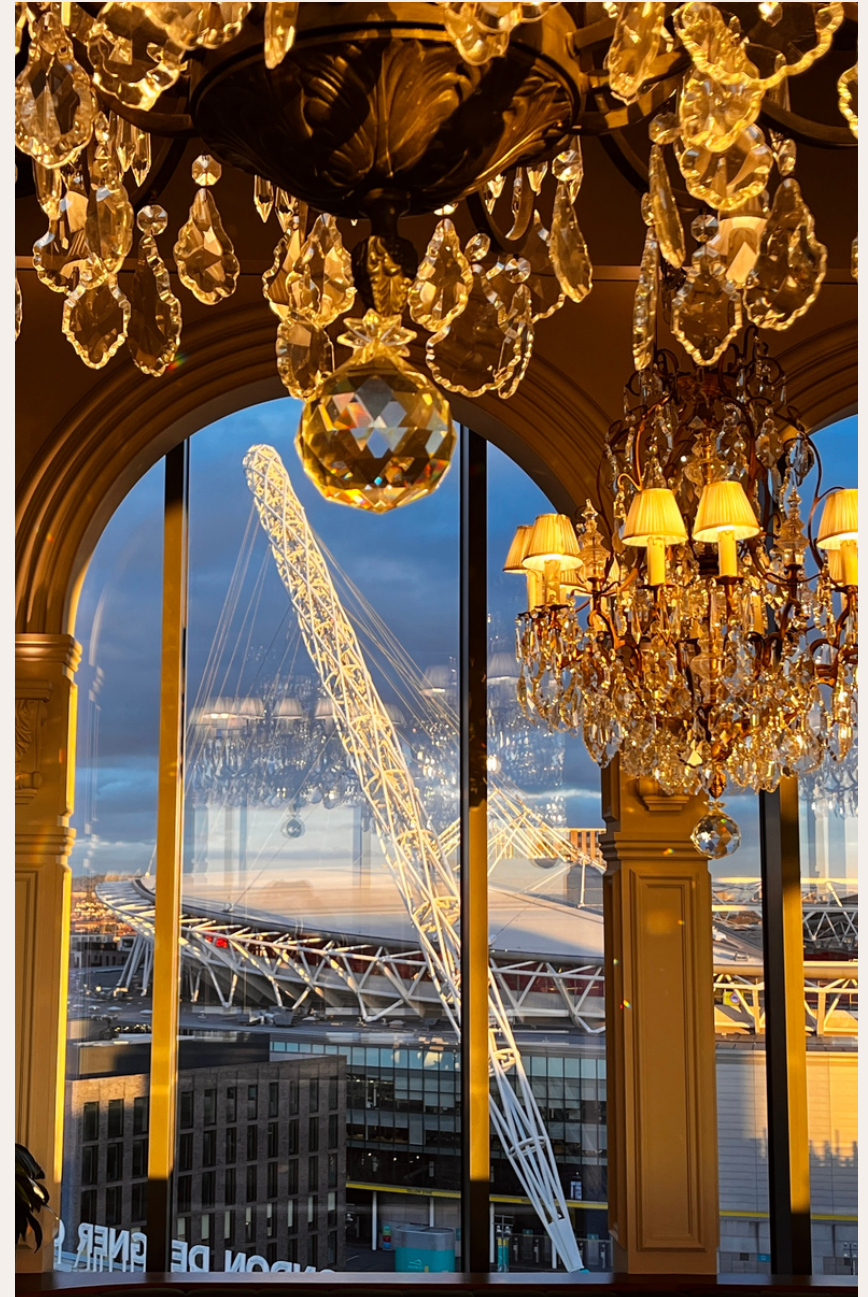
## Disclaimer

---

These particulars are provided as a general guide of what is being offered subject to contract and availability. These particulars are not intended, nor do they contain, any representation of fact upon which any interested party is entitled or should rely. Consequently this information should be treated as a general guidance and cannot be relied upon as accurately describing any of the Specified Matters described in any Order made under Consumer Protection from Unfair Trading Regulations Act 2008 (CPR), the Business Protection from Misleading Marketing Regulations 2008 (BPR).

All descriptions, dimensions, references to condition and necessary permissions for use and occupation and other details are given in good faith and are believed to be correct but any intending purchasers or leases should not rely on them as statements or representations of fact but must satisfy themselves inspection or otherwise as to the correctness of each of them.

The information provided is intended for illustrative purposes only and could change for example, in response to market demands or ground conditions. The landlord reserves the right to amend the specification as necessary without prior notice, but to an equal standard. Please note that whilst current views may be nonrestricted these could alter in the future. No person in the employment of our selling or leasing agent and representative has any authority to make any representations or warranty whatsoever in relation to the property



[Book a Tour](#) | [Follow Us](#)

## Find Us



### NEAREST TUBE STATIONS

Wembley Central  
(Bakerloo line)  
Wembley Park  
(Jubilee and Metropolitan line)

### NEAREST TRAIN STATIONS

Wembley Central  
(Southern & West Midlands Trains)  
Wembley Stadium  
(Chiltern Railways)

### NEAREST OVERGROUND STATION

Wembley Central

### NEAREST BUS STATIONS

18, N18, 182, 440, 483,  
83, N83, 92, 223

### WALKING DISTANCE FROM STATION

Wembley Central,  
16 minutes (0.8 miles)  
Wembley Park,  
14 minutes (0.6 miles)  
Wembley Stadium,  
8 minutes (0.4 miles)

## Contact Us

New York House,  
2 Stadium Way, Wembley, HA9 0AP  
+44 (0) 7469 283325  
enquiries@dariana.co.uk

[DARIANA.CO.UK](http://DARIANA.CO.UK)

[Book a Tour](#) | [Follow Us](#)